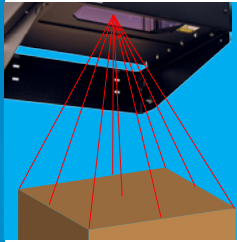
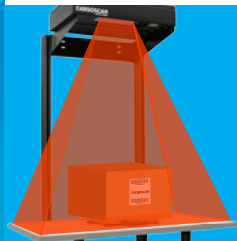


### Capture package data quickly and accurately



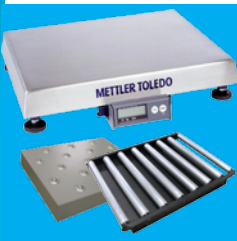
#### Laser accuracy

Safe and proven laser rangefinder technology captures thousands of data points for precise and repeatable measurements. Sealed unit is highly reliable, requires little maintenance other than cleaning.



#### Measure Large Boxes

Overhead mounting provides unrestricted package flow and ability to measure large boxes. Fast, non-contact measuring of boxes in any position makes it simple to operate and allows high throughput.



#### Workflow Flexibility

Sophisticated software allows calibration over a wide range of surfaces, including ball tops and rollers. You can design your material handling process for maximum efficiency, knowing that the CNS810 can be easily installed over any table, scale or static conveyor.



#### Stand Alone Or Fully Integrated

Modular in design, the system can be configured to accommodate your specific operating and data collection requirements. It's easy to integrate dimension, weight and package ID data, and communicate it directly to your host computer system.



#### Easy To Use Web Interface

Graphical interface is user-friendly, and provides easy set-up, calibration and diagnostics. Simple calibration process requires no tools; takes less than 5 minutes.



#### Acquire Dimensions, Weight, and ID in Seconds

Good product data is a critical part of warehouse product registration and shipping processes. Without accurate dimension data, warehouse space utilization and shipment planning is inefficient and packages are not rated properly, resulting in shipping back-charges, lost revenue, and customer service hassles.

Relying on operators to make manual measurements is slow and risky. The CNS810 system automates the process quickly, accurately and reliably. In just seconds, weight, dimension and package ID data is captured and communicated directly to your host computer system. You benefit from:

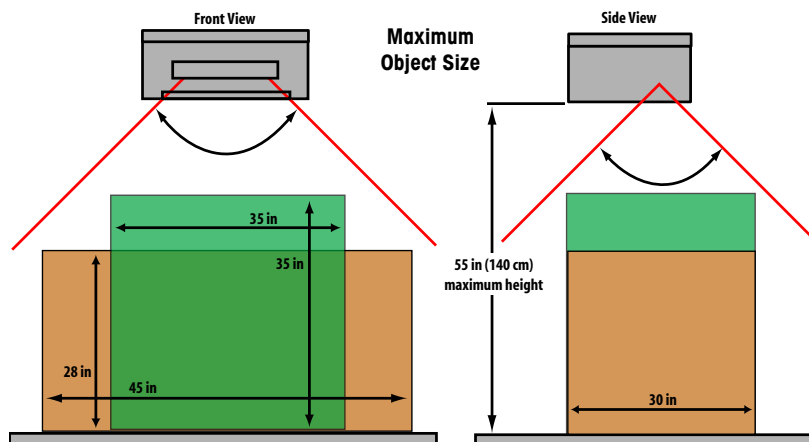
- Efficient space utilization
- Effective shipment planning
- Faster shipment processing
- Elimination of DIM weight back-charges

**Every major carrier relies on METTLER TOLEDO for dimensioning and weighing systems. Shouldn't you?**

**METTLER TOLEDO**

## CNS810 Dimensioner

- Self-contained device for non-contact measurement of cuboidal objects.
- Approved for Legal For Trade applications.
- Web Interface for Service, Set-up and Calibration.
- Choice of displays provides user interface and data communication options.
- Requires no maintenance other than cleaning.



<b>Accuracy<sup>1</sup></b>	± 0.2 in. (± 0.5 cm)
<b>Maximum object size (LxWxH)<sup>1</sup></b>	Up to 45 x 30 x 28 in. (115 x 75 x 70 cm) or 35 x 30 x 35 in. (90 x 75 x 90 cm) see illustration
<b>Minimum object size (LxWxH)<sup>1</sup></b>	2.0 x 2.0 x 2.0 in. (5 x 5 x 5 cm)
<b>Cycle time</b>	~ 3 seconds
<b>Object position</b>	Any orientation, stable side down.
<b>Object surface limitations</b>	Most opaque packaging materials acceptable. Variances may occur with highly polished or glossy surfaces, black or clear shrink wrap, styrofoam or polystyrene.

<b>Measurement surface</b>	Level tables, scales, or conveyors with flat-top, roller-top, or ball-top surfaces are all acceptable. Avoid polished or glossy surfaces.
<b>Temperature</b>	0° to 40°C (32° to 104°F) non-condensing humidity
<b>Power</b>	115V 60Hz, 1.5 Amps
<b>Laser</b>	Class II low power red laser, safe for viewing
<b>Communications Interface</b>	4 - Serial (9 pin female D-Sub RS232) 2 - TCP/IP 10/100 Mbs Ethernet (RJ45 female)

1) Specifications for Legal for Trade applications may vary.



### Programmable Display Module

- Quarter VGA color display.
- Combines data from multiple sources; displays messages and instructions.
- Serial data output to host PC.
- Application can be configured and easily customized.



### CS2200LX Display

- Optional display for use when no serial data output is required.
- Displays dimensions, volume, and error codes.



### Floor Stand

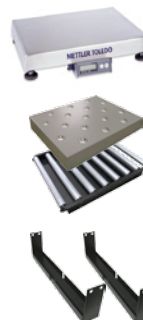
- Sturdy, rigid aluminum.
- Leveling feet.
- Adjustable and adaptable.

### Table Top Kit

- Heavy duty laminated top.
- 47" L x 28" W.
- Adjustable height.

### Wall Mount Bracket

- Steel construction.
- Mounts CNS810 directly to wall, beam or pole.



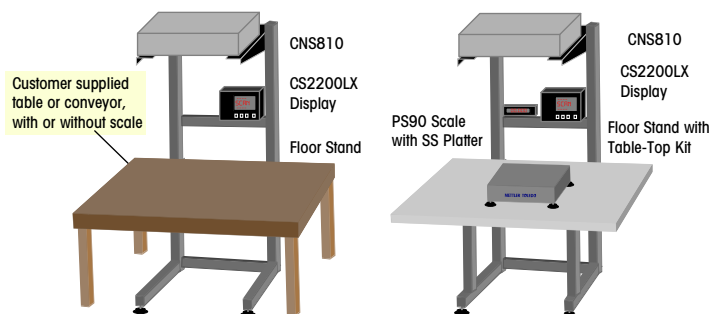
### PS90 Scale

- Heavy duty construction.
- Mount display on base or stand.
- 150lb x 0.05lb and 300lb x 0.1lb capacity models, NTEP certified.
- Available with flat SS (14"x16"), Ball Top (20"x16") or Roller Top (22"x18") Platters.

### Conveyor Scale Drop-in Kit

- Mounts PS90 scale in conveyor.
- Adjusts 22" - 32" inside width.

## Stand Alone Configurations

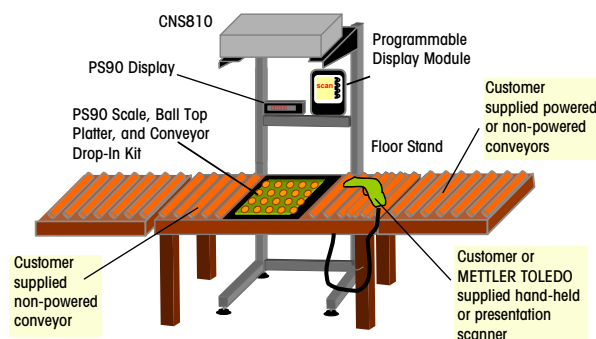


- Fast, simple dimensioning and weighing
- No data aggregation or host communication

**Mettler-Toledo, Inc.**  
1900 Polaris Parkway,  
Columbus, OH 43240  
Tel. 1-866-339-3538

Subject to technical changes  
© 06/2006 Mettler-Toledo, Inc.  
INDB0011.1E

## Integrated Configuration



- CNS810, PS90 Scale, and Bar Code reader connected to Display
- CNS810 triggered automatically after stable weight and ID scan
- Serial data communication in real time to host computer
- Label can be printed locally from Programmable Display



ΚΩΔΙΚΟΠΟΙΗΣΗ · ΙΧΝΗΛΑΣΙΜΟΤΗΤΑ · ΔΙΑΧΕΙΡΙΣΗ ΠΑΡΑΓΩΓΗΣ

Αγ. Αθανασίου 17 Τ.Θ. 76  
19002 Παιανία  
marketing@theodorou.gr

Τηλ: 210 6690900  
Fax: 210 6640200  
www.theodorou.gr