

The Domino DSL plus 55W

Extremely versatile and robust scribing laser designed to provide superior quality coding at high speed production lines on a wide range of surfaces including demanding substrates and applications.



Key Benefits

Versatile coding

- Marks serial numbers, batch codes, bar codes, 2D codes, real-time numbers, logos, graphics, or more complicated European and Asian characters at high speeds
- Range of marking fields dependent on application

High Reliability

- Robust and reliable in the most demanding production environments
- Proven Sealed-Off CO₂ laser technology requires no consumables and minimum maintenance

Easy to install and integrate

- Compact laser head with modular design for installation in any orientation
- Flexible, quick release conduit connection, completely detachable
- Step-by-step "Installation Wizard" ensures easy installation

Simple to Use

- Full-sized keyboard on the control unit with large colour WYSIWYG display and touch-pad
- Intuitive Windows® based software
- Basic User Interface option provides quick message selection and start-up



Pharmaceutical Option

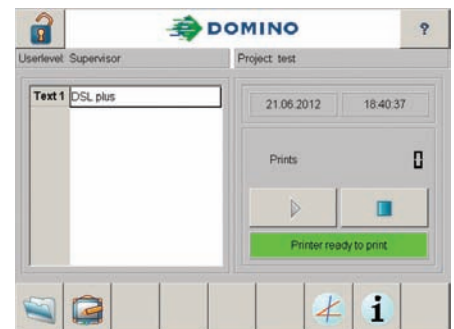
- Unique user passwords and change reporting
- Validation packages available
- Facilitates adherence to 21-CFR part 11 and GMP

Main Features

- Highly reliable and robust
- Laser beam steered by unique scanning technology
- High-resolution optics
- Compact, modular designed laser head
- Intuitive Windows® based software
- Axial beam output option



Large marking field offers versatility



Basic User Interface with pre-created message selection

Technical Specifications:

	55-40	55-60	55-120
Laser Type	Sealed-Off CO ₂ Laser, 30,000 hours MTBF		
Laser Power	55W		
Marking Features			
Characters per Second	1500*	1000*	350*
Product Line speed	400m/min* 1312ft/min*	305m/min* 1000ft/min*	125m/min* 410ft/min*
Number of Lines of Text	As many as desired*		
Character Height	0.8mm to size of marking field	0.5mm to size of marking field	0.3mm to size of marking field
Fonts	24 fonts, multi-language including full Unicode		
Marking Field & Focal Length	40x40, 60x60, 80x80 mm 100, 150, 200 mm	60x60, 120x120, 180x180 mm 100, 200, 300 mm	60x60, 120x120, 180x180 mm 100, 200, 300 mm
User Interface	Full sized integral keyboard and colour display, 640 x 480 resolution WYSIWYG entry, control language in English, German, French, Spanish, Dutch, Danish, Polish, Portuguese, Italian, Hungarian, Korean, Russian, Swedish, Chinese (Simplified & Traditional) and Japanese		
Operating System	Windows XPe		
Laser Head	Stainless steel and aluminium construction		
Weight & Dimensions	30 kg 1034 x 140 x 253 mm 66 lbs 40.7 x 5.5 x 9.9 in	32 kg 1034 x 140 x 216 mm 70 lbs 40.7 x 5.5 x 8.5 in	33 kg 1079 x 140 x 216 mm 73 kg 42.5 x 5.5 x 8.5 in
Control Cabinet	Stainless steel construction		
Weight & Dimensions	34 kg 441 x 535 x 411 mm 75 lbs 17.4 x 21.1 x 16.2 in		
Conduit Length	4.5m (14.8ft), 9m (29.5ft) optional		
Inputs & Outputs			
Product Detect Inputs	NPN / PNP / 24 V - Sensor		
Product Speed Detect	Shaft Encoder or Steady Signal		
Signal Inputs			
Signal Outputs	Laser Ready, Busy Signal, fume extractor control		
Interfaces	RS232, Ethernet (10/100 MBit), USB Port		

Electrical Requirements

1750VA

Environment

Designed for IP54, air cooled

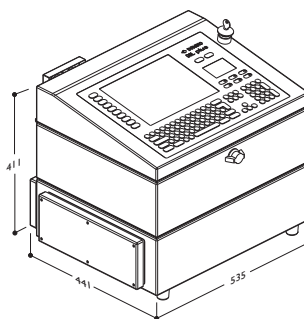
Environmental Standard

Operating Temperature 15° to 38° C
(60° to 100° F)
Operating Humidity Max. 90% RH,
non condensing

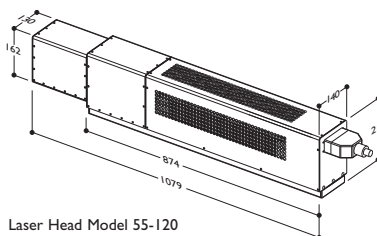
Options

User I/O, Axial beam output, Network and Remote Control Software (TCP / IP), Fume Extraction Shroud, USB Hard Drive Image Backup/Restore Kit

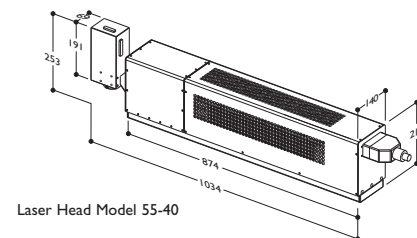
*Characters per second and production line speeds are substrate and code dependent



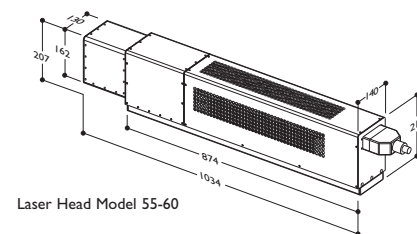
DSL plus 55W controller



Laser Head Model 55-120



Laser Head Model 55-40



Laser Head Model 55-60

All dimensions in millimetres. All dimensions length x width x height



ΚΩΔΙΚΟΠΟΙΗΣΗ - ΙΧΝΗΛΑΣΙΜΟΤΗΤΑ - ΔΙΑΧΕΙΡΙΣΗ ΠΑΡΑΓΩΓΗΣ
 Αγ. Αθανασίου 17 Τ.Θ. 76 Τηλ: 210 6690900
 19002 Παιονία Fax: 210 6640200
 marketing@theodorou.gr www.theodorou.gr

