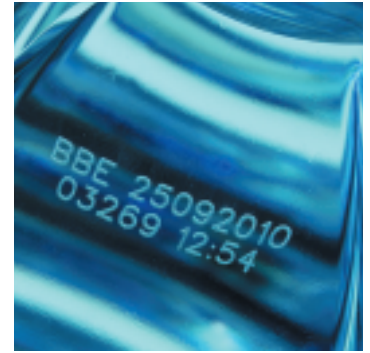


The Domino S300+

Compact, high-power scribing laser designed for high speed coding on a wide range of surfaces including PET, glass and labels.



Key Benefits:

High Quality Codes

- Consistent, permanent clear codes from simple single-line batch codes to multiple lines with real-time data
- Flexible code design, including the ability to mark serial numbers, batch codes, bar codes, 2D codes, fonts and graphics in any orientation
- Precise, letter-quality codes even at high production speeds
- Produces two lines of code at speeds in excess of 1,000 bottles per minute on PET, and 152 m/minute (500ft/min) on labels
- Produces crisp codes on PET without piercing the product

High Reliability

- Designed for use in demanding production environments
- Low maintenance

Easy to Install

- Small, light laser head can be mounted into tight production spaces and easily adjusted
- Compact control unit can be shelf-mounted for best positioning on production lines

Simple to Use

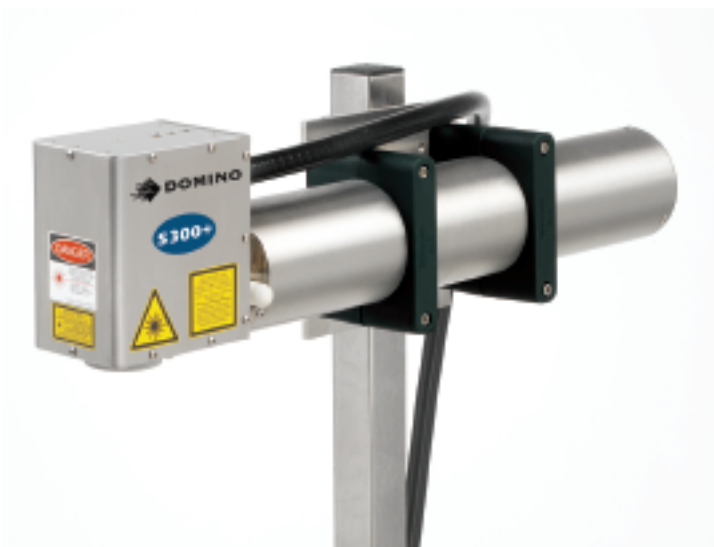
- Visible red aiming beam simplifies laser focusing, code position adjustment
- Colour touch-screen interface and familiar function keys for fast code set up and editing

Main Features:

- Designed to IP55
- High-resolution optics
- Laser beam steered by unique scanning technology
- Compact, light laser head
- Intuitive Windows® based software



Versatile and quality codes



Basic User Interface for simple operation

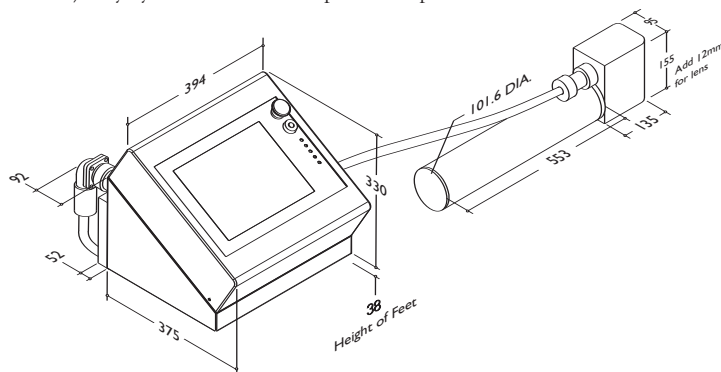
Technical Specification:

| | |
|---|--|
| | S300+ |
| Laser Type | Sealed CO ₂ Laser |
| Laser Power | 30W |
| Marking Features | |
| Characters per Second | 800* |
| Product Line Speed | Up to 305 m/min* (1000 ft/min*) |
| Number of lines of text | As many as required |
| Character Height | 0.8 – 76 mm (0.03"-3.0") |
| Fonts | 24 fonts, multi-language, including Asian characters |
| Marking Options | Text, logos, bar codes, 2D codes, graphics, automatic serial numbering, batch coding and real time clocks |
| Marking Field & Focal Length | 56x56 mm (2.2"x2.2"), Focal Length 89 mm (3.5") 76x76 mm (3.0"x3.0"), Focal Length 127 mm (5.0") |
| User Interface | 12.1" colour touch screen with WYSIWYG and SVGA quality (800 x 600 mm resolution) display control language in English, German, French, Spanish, Dutch, Danish, Polish, Portuguese, Italian, Hungarian, Korean, Russian, Swedish, Chinese (Simplified), Czech, Finnish and Japanese |
| Operating System | Microsoft Windows ® XPe |
| Laser Head | Stainless steel (304) |
| Weight & Dimensions | 10.9 Kg (24 lbs), L x H x W: 688 x 167 x 107mm, (27.09 x 6.57 x 4.21"), including lens |
| Control Cabinet | Stainless steel (304) |
| Weight & Dimensions | 18 Kg (40 lbs), D x H x W: 427 x 368 x 394 mm (16.81 x 14.49 x 15.51") |
| Conduit Length | 3 m (9.85 ft), 6 m (19.69 ft) optional |
| Inputs & Outputs | |
| Product Detect Inputs | NPN/PNP/ 2V - sensor |
| Product Speed Detect | Quadrature shaft encoder |
| Signal Inputs | External E-stop, interlock circuits, 9 configurable user inputs |
| Signal Outputs | Alarm, ready signal, fume extraction control, cooling air solenoid control, E-stop status, print complete, 3 configurable user output |
| Interfaces | PS2, VGA, RS232, Ethernet, USB, IDE |
| Electrical Requirements | 90 – 264 VAC, 47 – 63Hz, 600VA typical |
| Environment | |
| Cooling | Compressed air required typically 7 SCFM (200 litres/min) duty cycle and ambient temperature dependent |
| Environmental Standard | IP55, CE mark |
| Operating Temperature | 5 to 45°C (41 to 113°F) |
| Operating Humidity | 10 – 95% non-condensing |
| Options | Laser head mounting bracket, control cabinet stand, alarm beacon, fume extractor, air filtration kit |

*Character generation and production speeds are substrate and code dependent

Dimensions

All dimensions in millimetres



ΚΩΔΙΚΟΠΟΙΗΣΗ · ΙΧΝΗΛΑΣΙΜΟΤΗΤΑ · ΔΙΑΧΕΙΡΙΣΗ ΠΑΡΑΓΩΓΗΣ

Αγ. Αθανασίου 17 Τ.Θ. 76
19002 Παιατία
marketing@theodorou.gr

Τηλ: 210 6690900
Fax: 210 6640200
www.theodorou.gr

