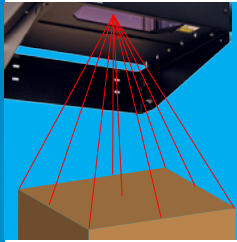


Capture package data quickly and accurately

**Laser accuracy**

Safe and proven laser rangefinder technology captures thousands of data points for precise and repeatable measurements. Sealed unit is highly reliable, requires little maintenance other than cleaning.

**Measure Large Boxes**

Overhead mounting provides unrestricted package flow and ability to measure large boxes. Fast, non-contact measuring of boxes in any position makes it simple to operate and allows high throughput.

**Workflow Flexibility**

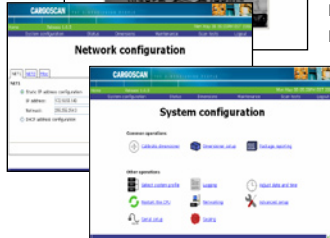
Sophisticated software allows calibration over a wide range of surfaces, including ball tops and rollers. You can design your material handling process for maximum efficiency, knowing that the CNS810 can be easily installed over any table, scale or static conveyor.

**Stand Alone Or Fully Integrated**

Modular in design, the system can be configured to accommodate your specific operating and data collection requirements. It's easy to integrate dimension, weight and package ID data, and communicate it directly to your host computer system.

**Easy To Use Web Interface**

Graphical interface is user-friendly, and provides easy set-up, calibration and diagnostics. Simple calibration process requires no tools; takes less than 5 minutes.

**Acquire Dimensions, Weight, and ID in Seconds**

Good product data is a critical part of warehouse product registration and shipping processes. Without accurate dimension data, warehouse space utilization and shipment planning is inefficient and packages are not rated properly, resulting in shipping back-charges, lost revenue, and customer service hassles.

Relying on operators to make manual measurements is slow and risky. The CNS810 system automates the process quickly, accurately and reliably. In just seconds, weight, dimension and package ID data is captured and communicated directly to your host computer system. You benefit from:

- Efficient space utilization
- Effective shipment planning
- Faster shipment processing
- Elimination of DIM weight back-charges

Every major carrier relies on METTLER TOLEDO for dimensioning and weighing systems. Shouldn't you?

