



# The A320i ink jet printer

Service free



With the intelligence to manage itself, the A320i makes coding simpler and is easier to maintain.



Scan the code to find out more about A-Series

Domino. Do more.

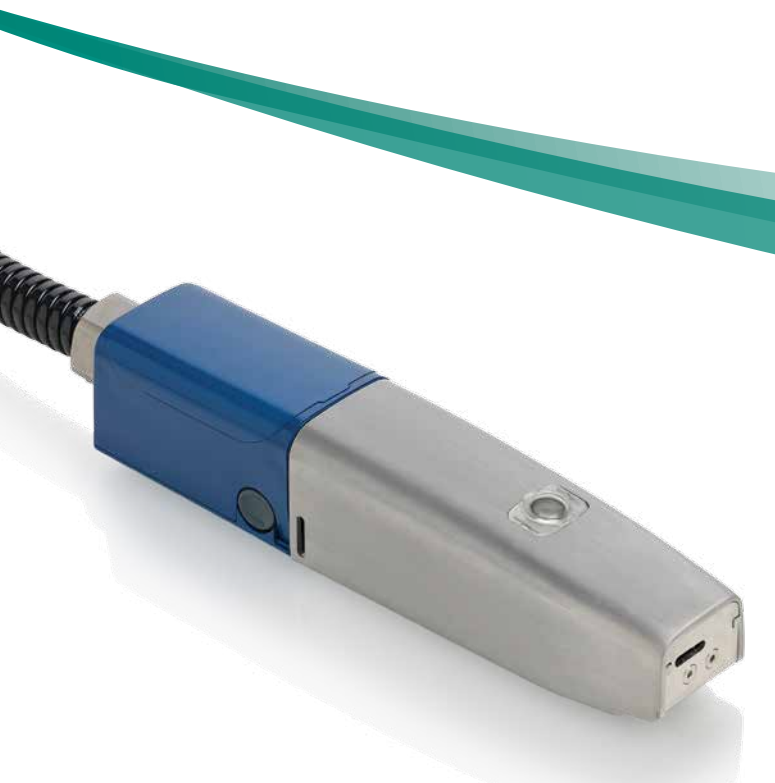
## Breaking the service routine

From the moment you press the start button, the **A320i** begins to make your life easier.

With the deployment of *intelligent Technology*, the **A320i** only needs to have consumables replenished to maintain optimum performance. That's all the service this printer requires.

You save time, as well as ink, and it keeps the printer online for longer.

It's another step forward. Building on our long standing experience of developing coders that do more to keep your line operating at its most efficient.

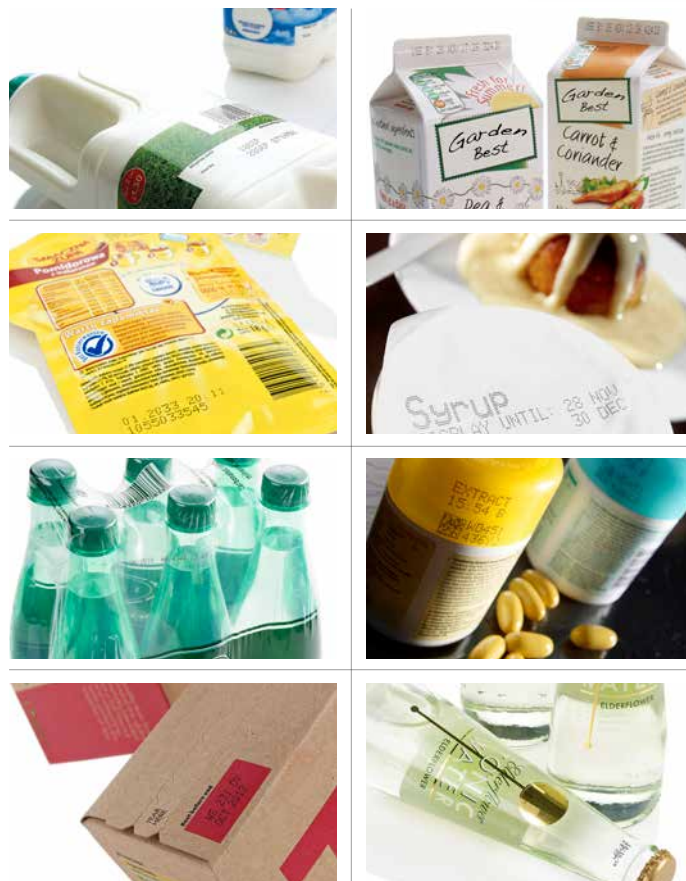


## The i-Tech ink system ... where engineering and chemistry come together

Domino's **i-Tech** inks are designed for optimum performance

- Optimised code quality
- Optimised reliability
- Optimised running costs

**i-Tech** inks that uniquely fully comply to EuPIA listings for food packaging



30 years of Domino ink jet reliability doesn't happen by chance

**i-Tech** inks from Domino

- Quality design
- Quality process
- Quality materials
- Quality people

Domino's **i-Tech** fluids range is at the heart of the printer ...



### Greener credentials

Domino's commitment and investment in sound environmental practices means we frequently exceed the demanding governmental, industry and company standards and regulations. We are committed to minimising the consumption of natural resources and energy and the creation of waste. Wherever practical, our products are RoHS and WEEE compliant.

### A320i

The A320i, with a service free routine and intelligent ink life - minimising waste as well as 40% reduced weight (versus previous models) - helps you to reduce your carbon footprint. With advanced energy saving software the printer can even automatically shut down when your production line stops.

# Service free – with intelligence inside

Introducing the **i-Tech Module** – no maintenance, no fuss

At the heart of the **i-Tech** ink system is the revolutionary **i-Tech Module**, which contains the working ink and ink filters. Changing the **i-Tech Module** is a job that anyone can do in less than 10 minutes.



## Intelligent

With **i-Tech** ink and solvent management, the **A320i** monitors how you're using it and works out when consumables are due for replacement.

## Improved Overall Equipment Effectiveness (OEE)

The self-sealing **CleanFill** cartridges make fluid replenishment easy and safe – and of course, they can be changed while the printer is operating. The larger volume makeup cartridges provide extended runtime between changes.

The result? A printer that is online for longer, with fewer interruptions – and less waste.



# Easy to integrate – production lines are complex enough



## Versatile

A range of User Interface (UI) options to suit every application and make management of multiple printers more convenient.

- Onboard interfaces
- Remote and web server
- Standard functions and networking protocols



## Accessible

Easy to integrate into complex environments with a wide range of Input/Output (I/O) to suit your needs. Our patented scripting technology allows special functionality without complex coding.

## Easy to use – for a stress free line

### Simple

Even our consumables are colour-coded for complete day-to-day convenience.



### Secure

For controlled situations, security management is included and is GAMP 5 compliant. So you can determine who has access to the settings. Message templates and text fields enable secure message editing, eliminating error.

## Easy to live with – because your time is precious



### Convenient

Just press a single button and walk away. We call it **SureStart**. It's our unique print head with a nozzle sealing and flushing process that guarantees consistent performance.

### Reliable

Combined with class-leading filtration and modulation, the Domino **A320i** incorporates a temperature-controlled head and measured viscosity control system to ensure consistent and efficient operation.



### Consistent

You can leave the **A320i** to get on with the job, through start up, during operations and shut down, with the peace of mind that it will deliver performance and quality, consistently.

**Domino. Do more.**

# A quick tour around the A320i

## Easy to install and maintain

Sleek industrial design is a noted feature of Domino printers.

**SureStart**  
print head

**QuickStep** operator  
interface or **SureTouch**  
keyboard

The **i-Tech**  
ink system

The revolutionary  
**i-Tech Module**,  
housing ink and filters

Fully integrated and coordinated  
range of accessories

High quality materials  
and construction



Our unique *intelligent Technology* system, **i-Tech**, helps your production lines lower maintenance, lower costs and be more efficient with your coding requirements.

**Domino. Do more.**



## Technical Specification:

### A320i

#### Operational Capability

Max number of unicode characters per line	255
Max number of lines	4
Max number of messages per store	256
Max number of stores per printer	16
Max line speed (SL 5x5)	325m/min

#### Interfaces

QVGA (320x240) with <b>SureTouch</b> key board	Standard
SVGA (800x600) colour <b>TouchScreen</b>	Optional
<b>TouchPanel</b> remote touch screen	Optional
Ethernet (web server and email)	Standard
USB	Standard
RS232	Optional
Domino Protocols	Codenet/Intercom
Industry Protocols	ZPL (limited)
4 stage 24v beacon (port is standard)	Optional
4 stage voltage free contacts	Standard
Programmable i/o (8 Inputs and 8 outputs)	Optional
Product detect	Standard
Shaft encoder	Standard

#### Environment

Weight	24.5kgs
IP rating	IP55
Operating temp	5 - 45°C (40 - 112 °F)
Humidity	10-90%
Power requirement	100-240v 50-60hz
Power consumption	56.3 Watts

#### Compliance

CE	Standard
TUV	Standard
RoHS	Standard
Sony Green Partner	Standard
Eupia compliant inks	Standard
Heavy metal free inks	Available
Halogen free inks	Available

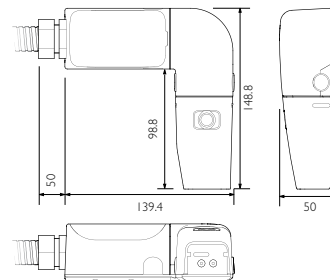
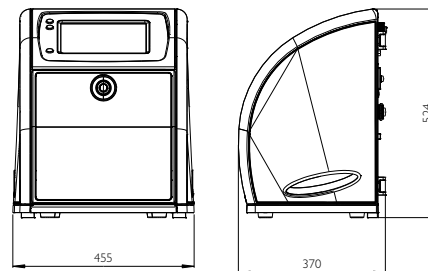
#### SureStart Print Head

Conduit length	3m
- Bend Radius	65mm
Nozzle size	60µ or 75µ
Heater	Standard
Positive air pump	Optional
Air Dryer	Optional

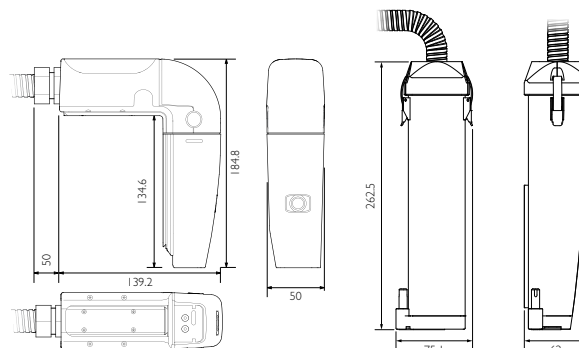
#### Ink System

<b>i-Tech</b> ink system	Standard
<b>CleanFill</b> ink cartridge	825ml*
<b>CleanFill</b> MU cartridge	1200ml*
<b>i-Tech Module</b> Replacement	Annual*
Routine Servicing	None
Solvent Reduction (Peltier)	Optional
* operator task	

Not to scale.  
For illustrative  
purposes only.

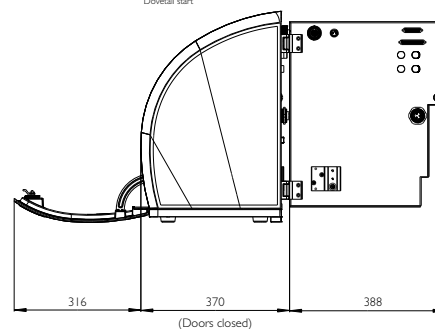
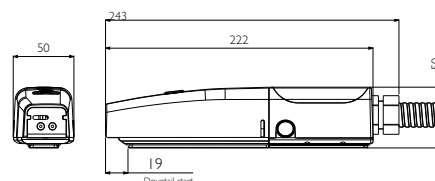


Horizontal 90 Degree Print Head Installation Dimensions



Vertical 90 Degree Print Head Installation Dimensions

Heavy Duty Print Head



(Doors closed)

#### Print Sample

お客様へ 生产日期 LANGUAGES 7x5 TWIN LINE LARGE BB04/11/14 /14:20:03  
 DOMINOMIXED RASTER FOUR LINE PRINTING 5x5 SINGLE LINE  
 ABCDEFGHIJKLMNOPQRSTUVWXYZ ABCDE 123456 L: 721: 34  
 12345678 31: 12: 06



You Tube

